

SCENARIOS



MARKANT | DYNAMIC WORKING

A NEW SCENARIO

For a furniture range which is always compatible with the current scenario of your company, Markant presents Scenarios. Organisations are becoming more virtual; portable technology means office work is no longer confined to the office. Employees do their work on the move, in a café, on secondment or during an informal discussion in the company cafeteria. Scenarios is a versatile furniture system that can be used as an individual workstation, a hot desk, a team workstation or as a conference table. No matter what kind of work you do, there is a version of Scenarios to suit.

These days, organisations must be versatile to suit the constantly changing business market. Furniture plays an important role in the flexibility of the business. The office environment can change the way teams communicate; to focus on individual work or collaborate on projects, to create a workspace that encourages productivity. With a Scenarios office, the furniture is tailored to suit the team's working style, and can be reconfigured at a later date as their needs evolve.



A Scenarios workstation is a plug and play workstation. Through the complete integration of computers, power and data cabling a laptop user has easy access to connections for fast start up or departure. Permanent computers can be wired into the central power and data channels and closed away inside cabinets. Scenarios can be freestanding away from walls with cabling connected to the workstation directly through the floor or the ceiling via power poles. This way the installation allows flexibility with the layout designs.



CABLE MANAGEMENT

The Scenarios range has been designed to eliminate the mess of tangled cables in and under the workstation. Interconnecting cable channels have segregated sections for power and data to keep cables hidden and tidy.

FLEXIBLE LAYOUT

You are free to place the workstations in any space without being restricted to placement near walls for electrical supply. Power and data cables are led from the ceiling or floor to the workstations via a power pole.

PLUG AND PLAY

All your electronic tools are within arm's reach. Desk top power points and USB ports give easy access for laptop chargers and accessories so it's fast to start work in the morning, and fast to depart for an external appointment. Shared printers can be networked through concealed channels.



OPEN SPACES

You no longer have to think in terms of cubicles and departments. Walls disappear both literally and figuratively, resulting in improved communication between team members, an economy of space and greater flexibility.

PERSONAL AND FUNCTIONAL

Scenarios provides every user with a personalised workstation with concealed technology and a choice of storage types such as CPU holder, waste, filing, cupboards. Scenarios creates a pleasant work environment in which the employee can be productive.

SUSTAINABLE SCENARIO

The Scenarios range is constructed from sustainable materials, which are designed for disassembly and can be recycled. Cabinets can come equipped with hidden waste bins so the sorting of waste and recycling can begin at the workstation.






CABLE MANAGEMENT DESIGN

In many other workstation systems, cable management is just an afterthought; however, Scenarios has been designed to incorporate a complete cable management solution. Interconnecting cable channels have segregated sections for power and data so cables are well organised.

There is an option for cable trays to be lockable to limit access to IT professionals. Shared printers and faxes can be networked with cables concealed within the cabinets. For removable products such as laptops, phone chargers and PDAs, each workstation can also have above desk power, data and USB ports.

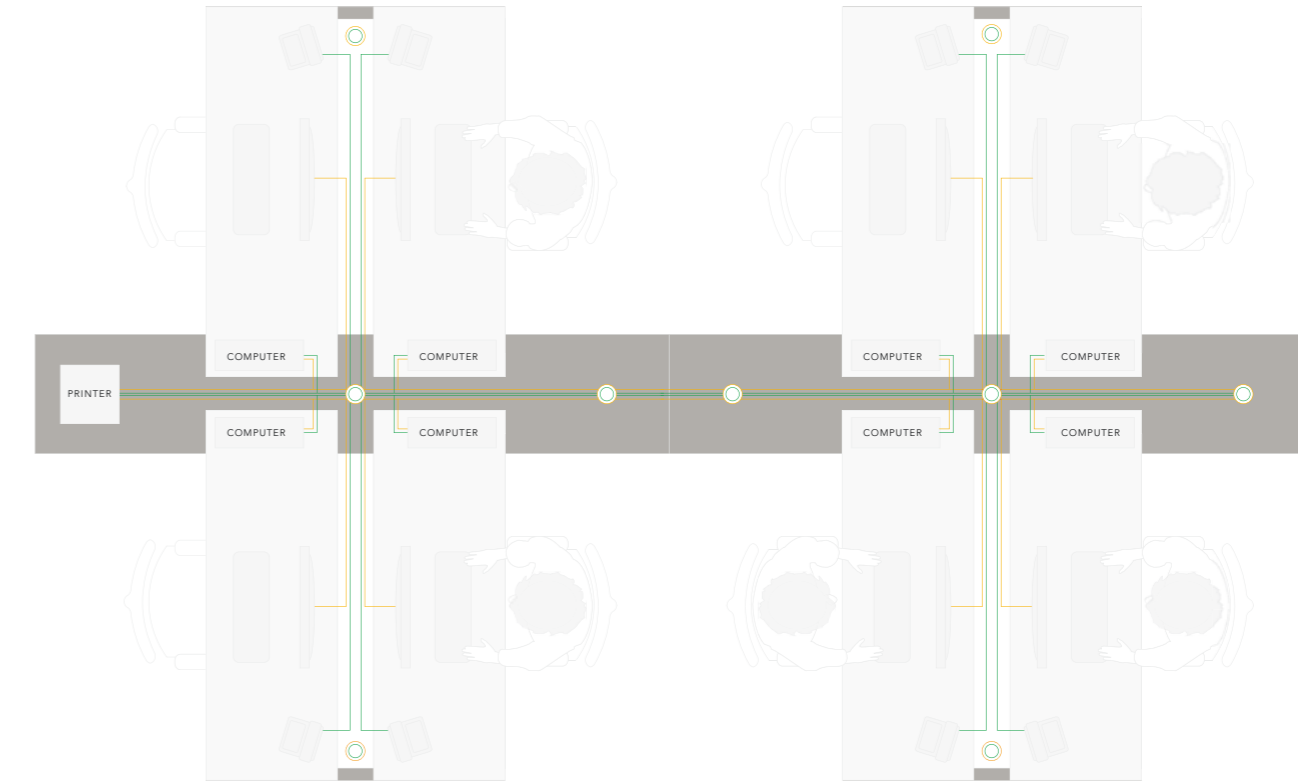


-  Cable entry point
-  Electric power
-  Data

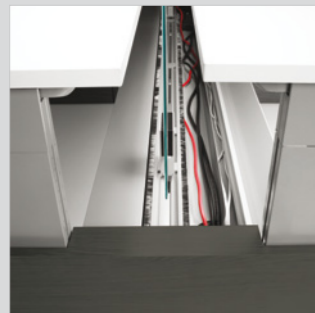
LIGHT REFLECTION AND MONITOR GLARE

Scenarios workstations can be configured to avoid glare or reflection onto monitors. Placing the workstation perpendicular to the light reduces glare and prevents tired eyes. These two clusters of eight use the same components, but have been rotated to suit the position of the window.

This is also a useful feature to have if the furniture will be taken to new premises where the floor plan and light sources are different. The same components can be used in a rotated position so the workstation can maintain the optimum position of monitor to light.







CABLE MANAGEMENT

Closable cable channels pass through the bottom of the work places. Data and electricity cables can be separated. The channels feature pull-protection and other facilities as standard. Cables that originate on the work top can directly access the underlying channel. The channel has a continuous groove that features small brushes.



IT INTEGRATION

The CPU is safely stored and concealed in a specially designed CPU cabinet. The CPU opens outwards when the door opens, which brings the CPU controls within the user's reach. To prevent the CPU from overheating, appropriate air circulation has been ensured in the CPU cabinet to dispose of excess heat.

The CPU area can also be fitted with an integrated waste bin where a computer would normally be placed.



INTERCONNECTING CABLE CHANNELS

The cable channels continue into the cabinets and are easily accessible. They are located under the removable skirting and are available in a stainless steel look or wood print. The cable channels run continuously when multiple cabinets are placed next to each other, which means all conceivable configurations have ideal cable infrastructure. The cabling concept has been patented by Markant.

HEIGHT ADJUSTMENT

Scenarios work places can also be adjusted in height using a handle or can be fitted with optional electric controls.

The easy-to-adjust work top height is an important feature in the Scenarios concept, which means the work place can always be adjusted to the height of the user. This means employees without a fixed work place can find a suitable work place anywhere in the organisation and adjust it to their needs.



PRIVACY

Nice glass panels or fabric-coated screens with functional capacities can be placed between the work places.

The fabric-coated screens are available in all colours, prints and fabric types, with possibilities to introduce extra noise-proofing on the work place.



PLUG AND PLAY

The work place is optimally arranged for employees by incorporating smart accessories, which allows them to start work immediately. Not only the work top, but the monitor or the laptop can also be adjusted individually.

Immediate access to power and data on or in the work top are essential to users because laptops and other electronic devices need to be connected and charged.



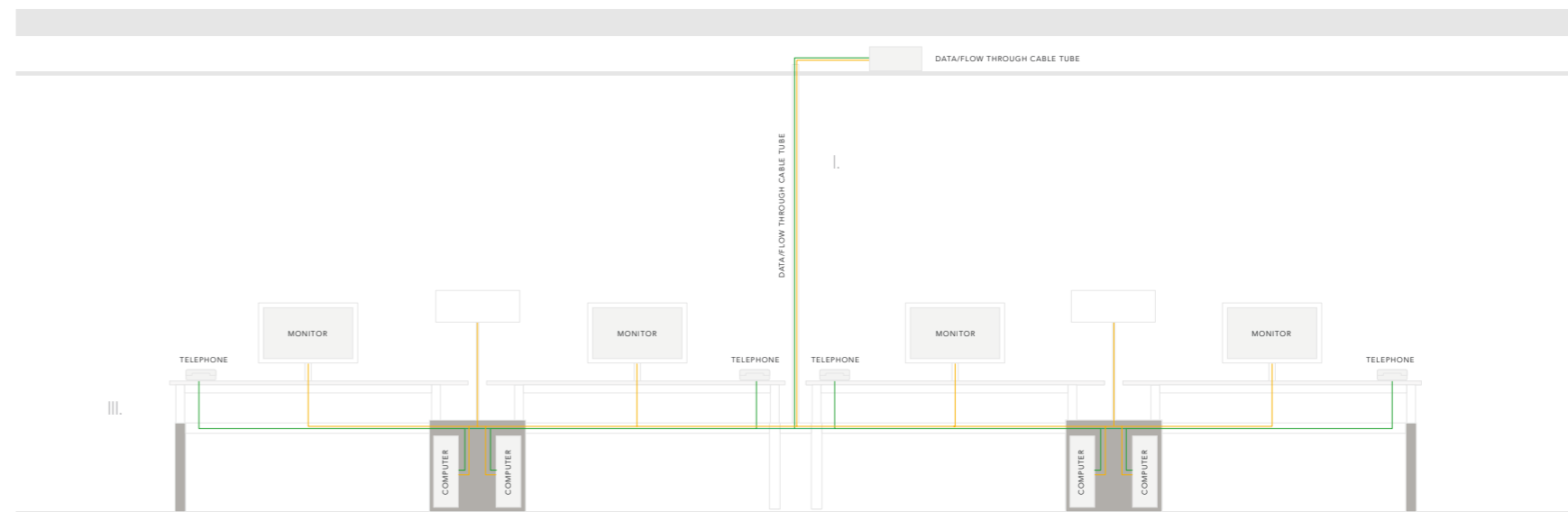


CABLING OPTIONS

Scenarios allows freedom with the floor plan layout because the wiring source is not constricted to the walls. Workstation clusters can be placed freestanding in open spaces to improve traffic flow and make the best use of space.

Cabling can be installed from three origins:

- I. From the ceiling using a power pole or umbilical
- II. From the floor into 'cabinets' or 'cubes'
- III. From the wall or skirting into cable channels under the workstations



- Electric power
- Data

SUSTAINABLE SCENARIOS

Scenarios has been designed using principles of Markant System Architecture (MSA). With modular construction and interchangeable components there are infinite possible combinations of workstations, benches and conference tables. As your furniture needs change over time, existing parts can be re-configured into a new design.

The Scenarios range has a timeless design, making it a unique and attractive object in the workplace for many years to come.

With Markant Life Recycle Service, we ensure that at the end of their period of use, workstation components can be re-used or recycled.

1 ENVIRONMENTAL REGULATIONS

- Markant undertakes to meet environment-related legislation
- Markant Netherlands BV, Australia and Malaysia are ISO14001 certified
- Scenarios meets the requirements for Good Environmental Choice Australia (GECA)
- please ask for details

2 SUSTAINABILITY TARGETS

- Reduction of energy consumption
- Reduction of material consumption
- Use recyclable materials from sustainable sources

PERSONAL SCENARIOS

Like no other range, Scenarios furniture is able to give expression to your corporate identity. Imagine a scenario where furniture is able to optimise the wellbeing and the services of employees.

With a large selection of feature options, there is always a version of Scenarios to suit you. Scenarios has been designed with great attention to detail, which creates a stylish interior and a particularly individual appearance.

Scenarios is simple to adapt to each person's measurements with electronic or manual height adjustment, ensuring a comfortable and ergonomic working position.

The cabinet modules, which can be stowed away, can be fitted with combinations of drawers, adjustable shelves, suspension file frames, CPU storage, waste bins and space for personal items.

4 MARKANT LIFE CYCLE SERVICE

- Re-use and re-configuration of MSA parts in your own organisation
- Re-use of MSA parts by third parties (mediated by Markant)
- Taking back furniture according to Markant Product Stewardship Program
- please ask for conditions

3 SCENARIOS PRODUCT DESIGN

- Scenarios workstations are modular and designed for disassembly
- Materials can be separated using simple hand tools
- Worktop materials meet the E1 standard of formaldehyde emission or can be made in E0 option





PANELS**SINGLE DESK**

Single desk with End Panels.
Motorised or Manual Height adjustment.
Worktop depth 75 cm.
Worktop width 160 / 180 / 200 cm.

**COMBI DESK**

Cluster of 2 with End Panels.
Motorised or Manual Height adjustment.
Worktop depth 75 cm.
Worktop width 160 / 180 / 200 cm.

**COMBI DESK+ STAND ALONE CABINET**

Cluster of 4 with End Panels and Centre H Legs.
Motorised or Manual Height adjustment.
Worktop depth 75 cm.
Worktop width 160 / 180 / 200 cm.

CUBES**CUBE + PANEL**

Cluster of 2 with Cube and End Panel.
Motorised or Manual Height adjustment.
Worktop depth 75 cm.
Worktop width 160 / 180 / 200 cm.
Includes storage space & CPU housing.

**CUBE + CUBE**

Cluster of 4 with Cube Ends and Centre H legs.
Motorised or Manual Height adjustment.
Worktop depth 75 cm.
Worktop width 160 / 180 / 200 cm.
Includes storage space & CPU housing.

**END CUBE + BTWEEN CUBE**

Cluster of 4 with Combi cubes.
Motorised or Manual Height adjustment.
Worktop depth 75 cm.
Worktop width 160 / 180 / 200 cm.
Includes storage space & CPU housing.

CABINET SHORT**END SHORT CABINET + PANEL**

Cluster of 2 with End Short Cabinet and End Panel.
Motorised or Manual Height adjustment.
Worktop depth 75 cm.
Worktop width 160 / 180 / 200 cm.
Includes storage space & CPU housing.

**BTWEEN SHORT CABINET + PANEL**

Cluster of 4 with Between Short Cabinet and End Panel.
Motorised or Manual Height adjustment.
Worktop depth 75 cm.
Worktop width 160 / 180 / 200 cm.
Includes storage space & CPU housing.

**END SHORT CABINET**

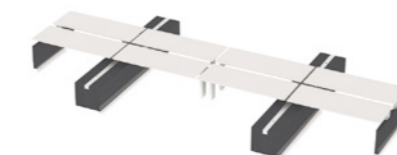
Cluster of 4 with End Short Cabinets.
Motorised or Manual Height adjustment.
Worktop depth 75 cm.
Worktop width 160 / 180 / 200 cm.
Includes storage space & CPU housing.

CABINET**END CABINET**

Cluster of 2 with Cabinet and End Panel.
Motorised or Manual Height adjustment.
Worktop depth 75 cm.
Worktop width 160 / 180 / 200 cm.

**2X BTWEEN CABINET**

Cluster of 8 with Combi cabinets and End Panels.
Motorised or Manual Height adjustment.
Worktop depth 75 cm.
Worktop width 160 / 180 / 200 cm.
Includes storage space & CPU housing.

**2X BTWEEN CABINET**

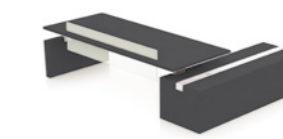
Cluster of 8 with Combi Cabinet, End Panels & Centre H legs.
Motorised or Manual Height adjustment.
Worktop depth 75 cm.
Worktop width 160 / 180 / 200 cm.
Includes storage space & CPU housing.

EXECUTIVE**PANEL + PANEL**

Single desk with End Panels.
Motorised or Manual Height adjustment.
Worktop depth 100 cm; worktop width 230 cm.
Worktop thickness 3,8 cm incl. frostscreen.

**PANEL + CUBE**

Single desk with Cube and End Panel.
Motorised or Manual Height adjustment.
Worktop depth 100 cm; worktop width 230 cm.
Worktop thickness 3,8 cm incl. frostscreen.

**PANEL + CABINET**

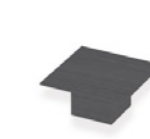
Single desk with Cabinet and End Panel.
Motorised or Manual Height adjustment.
Worktop depth 100 cm; worktop width 230 cm.
Worktop thickness 3,8 cm incl. frostscreen.

MEETING**PANELS ON OUTSIDE**

280 x 100 cm, worktop thickness 4 cm.
Recessed panel feet 80 cm deep.
Also available with a 120 cm deep top.
Available in different lengths.

**RESET PANELS**

320 x 140 cm, worktop thickness 4 cm.
Recessed panel feet 10 cm deep.
Also available with a 160 cm deep top.
Available in different lengths.

**COLUMN**

160 cm x 160 cm, worktop thickness 4 cm.
On a square column foot.
Also available as 140 x 140 cm.

POWER SUPPLY**MONITOR ARMS****PC / LAPTOP SUPPORT****LIGHTING****ACCESSOIRES****SCREENS****STORAGE****SEATING****POWER DOCK**

3 power, 2 data plugs.
Indispensable for laptop workstations.
Ideal for phone charges and other electronic devices.
Clamps to worktop. Various models available.

**ZOOM 102**

Slim design monitor arm with desktop clamp.
Adjustable screen height and depth, twist and tilt.
Optionally with two arms for double screen use.
Optionally with opening through the desktop with cable channel.

**PROTECTOR**

Flexible CPU holder with sleek modern design.
Suitable for vertical and horizontal placement.
Available in white, aluminium and pearl.
Optionally rotatable and securable with cylinder lock.

**ESTRELLA**

Office lamp with dimmable, energy saving LED illumination. Individual flexible task light with desk clamp included.
Option screen bracket or floor base plate.

**3RD LEVEL**

Functional storage space for ring binders above the workstation.

**GLASS SCREEN**

Toughened glass panel with frosted finish (matt). Available in various sizes.
Fitted through the desktop.

**V-STORE**

Steel sliding door cabinet with 3-point locking. Available in heights of 72/105/135/165/198.
Available in white or silver.
Worktop covers available.

**AMARO**

High quality ergonomic desk chair. The multiplicity of adjustment options mean that this chair can be completely adapted to every user.

**POWERFRAME**

4 power, 2 data plugs.
Indispensable for laptop workstations.
Ideal for phone charges and other electronic devices.
Clamps to worktop.

**Q4-SERIES**

Multi-functional monitor arm with desk clamp. Available in silver or white. Adjustable screen height and depth, twist and tilt. Available with 2, 3 or 4 arms for multiple screens, but also for attaching laptop holder or Thin Client holder. Optionally with opening through the desktop with cable channel.

**VESA LAPTOP SUPPORT**

Suitable for any LCD arm with VESA Connection. Ideal for Laptop + Screen use.
Ideal for use with Q4 Series.

**LIGHT SHADE**

Designer lamp for general and atmospheric lighting. (HxWxD) 70-110x50x50 cm. featuring XW LED light source.

**FILE DRAWER**

Files within reach. Removable frame for purposes of A4 suspension files. For in cubes and cabinets.

**MYSCREEN**

Modular partition range. Aluminium frame available in any required size with various standard fabrics. Optionally with acoustic filler, perfectly suited for working in open-plan offices.

**M-STORE**

Complete melamine cupboard range with swing and sliding doors. Available heights: 195, 160, 120 and 78 cm. Colours: white, chateau oak and driftwood. Standard layout with shelves.

**LUCA**

Desk chair offering very good value for money. With synchronising mechanism for ergonomic seating. The mesh back lends a contemporary look.

**POWER POLE**

Removeable aluminium power pole. Includes power/data segregation. Easy to adapt to required length.

**ZOOMFLEX ARM**

LCD arm with user-friendly gas spring adjustment, mounting with desk clamp or grommet.

**TRAVELLER LAPTOP SUPPORT**

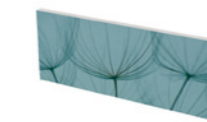
Vital for a healthy posture when using a laptop. Collapsible and easy to transport in the laptop case. Can be set to various positions.

**UP & DOWN LIGHTER 250W**

Solid, dimmable energy saving light. Illuminates upwards and downwards. Available in a twin version for four workstations.

**RUBBISH BIN**

Clean desk and clean office. Lightweight rubbish bin. For a tidy office.

**MYSCREEN WITH CUSTOM PRINT**

MyScreen can be produced with a customer-specific print. This enables the workplace to be further personalised and the atmosphere in the working environment further enhanced.

**C-STORE**

The metal swing door and drawer cabinet with allure. Available in a wide range of variants. Colour: white and silver, doors optionally available in melamine. Standard division with drawers and/or shelves.

**ORGANIC**

Management desk chair with minimalist design. The frame is finished with a patented Inox lacquer for a durable appearance. Seat and back finished with net cover or black leather upholstery.

MARKANT | DYNAMIC WORKING



WWW.MARKANTOFFICE.COM